

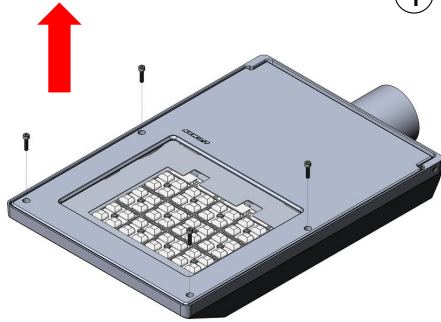
INSTALLATION AND SERVICE MANUAL

LIGMAN
NORTH AMERICA

The installation instructions for the LED module and optic assembly for a
Steamer Streetlight fixture (USE-90002)

Remove Fixture Screws

①



- Remove the 4 screws holding the fixture together.

Disconnect LED Wires

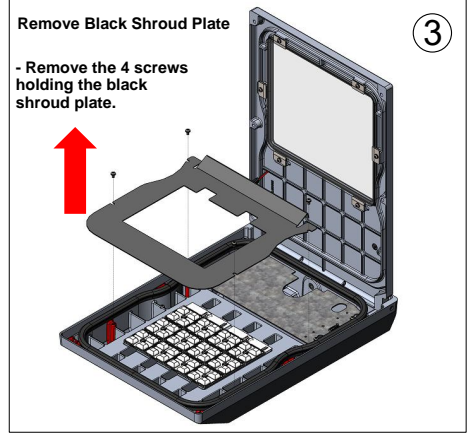
②



- Disconnect the LED wires and carefully remove the connector wire through the hole in the LED cover.

Remove Black Shroud Plate

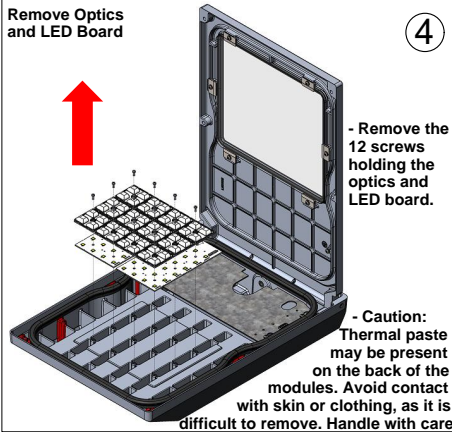
③



- Remove the 4 screws holding the black shroud plate.

Remove Optics and LED Board

④

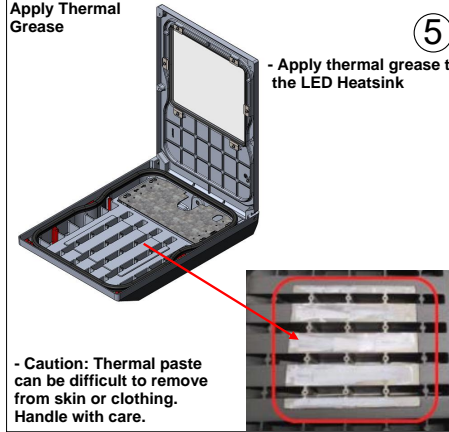


- Remove the 12 screws holding the optics and LED board.

- Caution: Thermal paste may be present on the back of the modules. Avoid contact with skin or clothing, as it is difficult to remove. Handle with care.

Apply Thermal Grease

⑤



- Apply thermal grease to the LED Heatsink

- Caution: Thermal paste can be difficult to remove from skin or clothing. Handle with care.

Reassemble New LED Board and Optic Lens

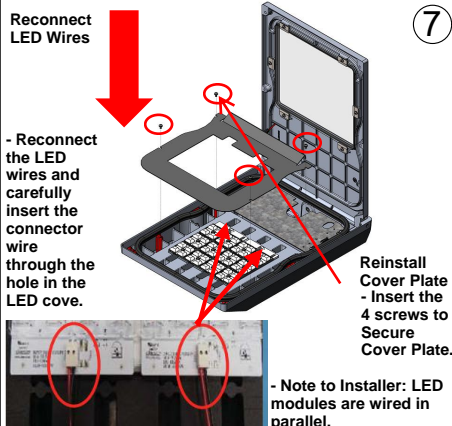
⑥



- Install the new LED board and optic lens onto the heatsink.

Reconnect LED Wires

⑦



- Reconnect the LED wires and carefully insert the connector wire through the hole in the LED cover.

Reinstall Cover Plate
- Insert the 4 screws to Secure Cover Plate.

- Note to Installer: LED modules are wired in parallel.



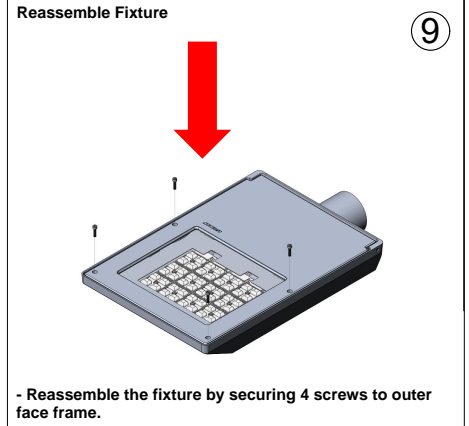
Connect LED Wires

⑧



Reassemble Fixture

⑨



- Reassemble the fixture by securing 4 screws to outer face frame.

Notice to Installer

Wiring Instruction ⚠ Warning:

- Risk of Fire and Electrical Shock, This fixture must be installed only by a qualified electrician, Installation must adhere to the National Electrical Code (NEC) and all applicable local and federal regulations.
- Always disconnect power before servicing the fixture.

Ligman Lighting USA

7144 NE Progress Court, Hillsboro
Oregon, 97124, USA
Tel : 503 645 0500

www.ligmanlightingusa.com

USE-90002-LED MOD|OPTIC 3/3/2025 REV.DZ